

# Introducing Athenia™ modules

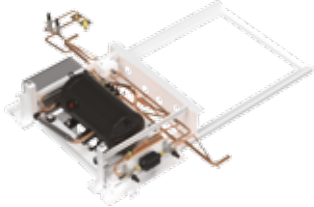
**S module**

- Athenia for "standard" applications



**E-module**

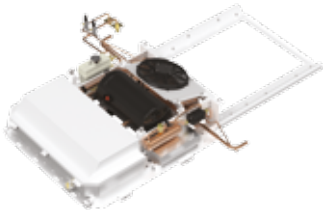
- Hermetic system for hybrid or trolley bus applications



Athenia™ modules

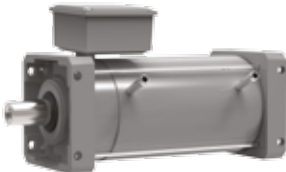
**EA-module**

- Hermetic system with power electronics for all applications

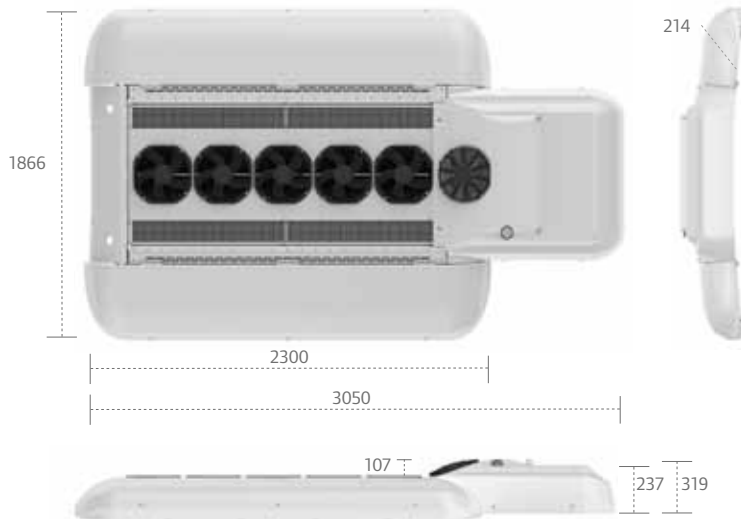


**Alternator**

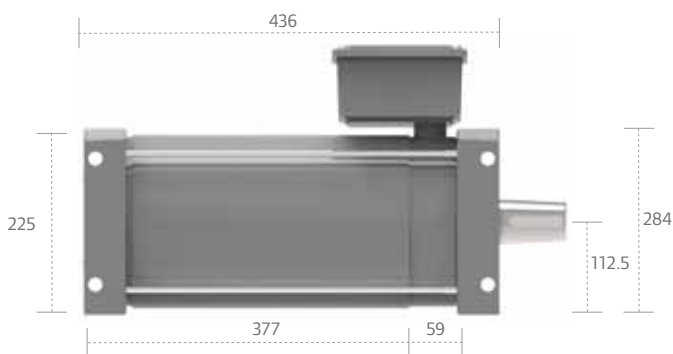
- Synchronous alternator for applications when there is not a large electrical power reserve i.e. diesel



## Introducing Athenia™ modules



EA 960



High efficiency synchronous alternator

### Options

- High efficiency alternator for diesel applications
- Standby power for applications of unit operation without running the engine
- DC power module for applications for which there is no available 27 VDC feed or to give charge to the bus net

### Cooling capacity

- EA700 = 16 kW rated or 27 kW list
- EA960 = 24 kW rated or 40 kW list

### Weight

- E700 unit = 229 kg
- EA700 unit = 293 kg
- E960 unit = 235 kg
- EA960 unit = 299 kg

### Alternator

- 40 kg

### Airflow

- 700 unit = 3,500 (4,400) m<sup>3</sup>/h
- 960 unit = 5,100 (6,600) m<sup>3</sup>/h

All details in this data sheet are preliminary and will be confirmed once we are in serial production which is expected to be March 2013.

europa.thermoking.com    ingersollrand.com

Ingersoll Rand Alma Court Building - Lenneke Marelaan 6, B-1932 Sint-Stevens-Woluwe, Belgium.

© 2012 Ingersoll-Rand Company Limited TK 70003 (09-2012)-EN